

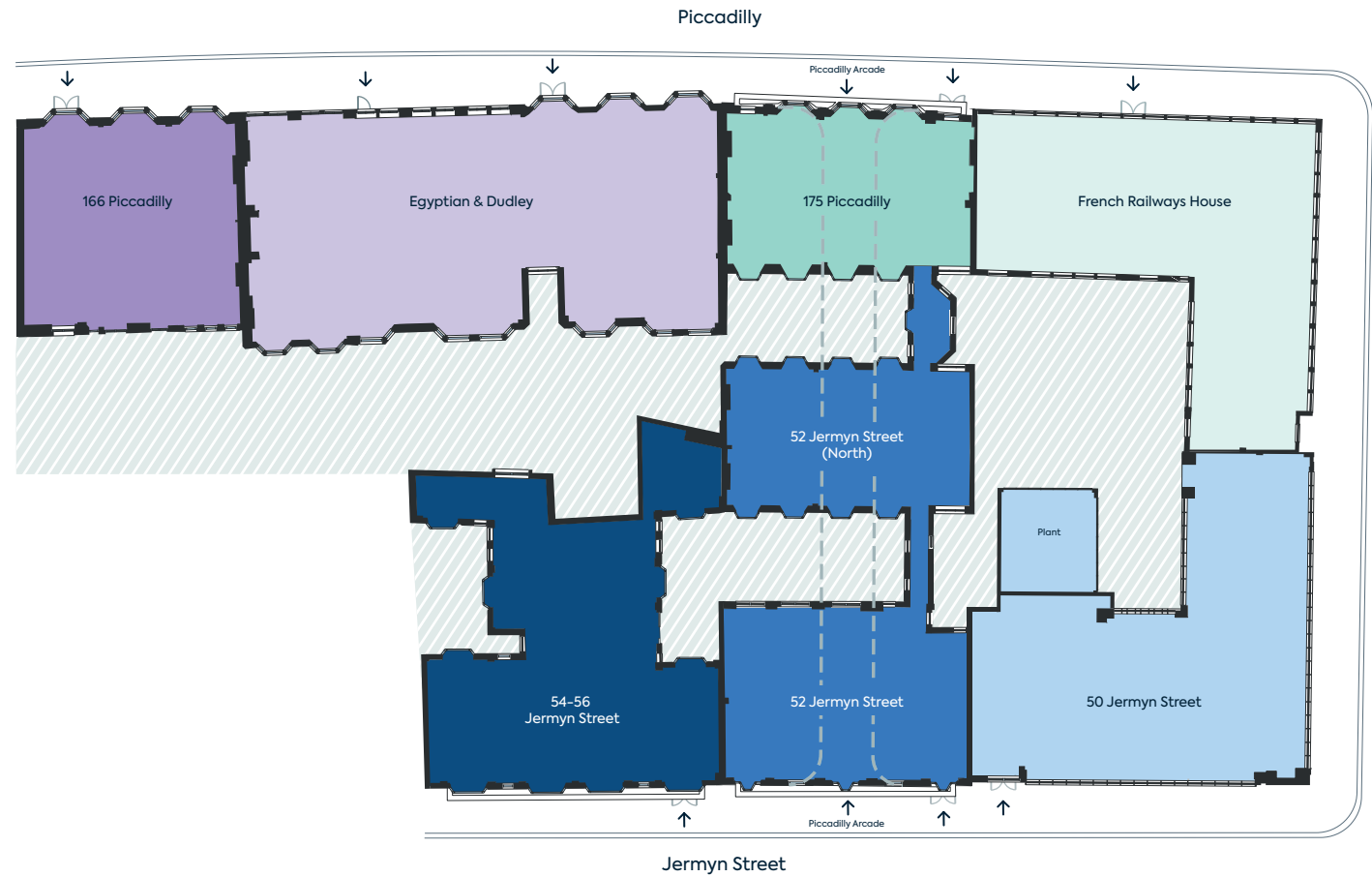
Fitted &  
Fully Managed



Discover 166 Piccadilly



# Piccadilly & Jermyn Street Masterplan



- 166 Piccadilly
- Egyptian & Dudley
- 175 Piccadilly
- French Railways House
- 50 Jermyn Street
- 52 Jermyn Street
- 54-56 Jermyn Street
- Pavement
- Roof of ground floor
- Building entrance on ground floor
- Piccadilly Arcade

# 166 Piccadilly

166 Piccadilly, St. James's, London W1J 9EF



166 Piccadilly is an attractive period building which has been refurbished with modern Fitted workspaces and has a unique vista looking up Old Bond Street.

Situated in the heart of St James's, on an iconic street steeped in history. 166 Piccadilly occupies a prominent position on the south side of Piccadilly close to the junction with St James's Street. Green Park and Piccadilly Circus underground stations are within easy walking distance.

World class retail

## The Building



Size:  
12,012 sq ft



Secure  
cycle spaces



On site  
concierge



Shower facilities



24 hour access  
and security

## Specification



Fitted & Fully Managed  
workspaces



VRF heating  
and cooling



1 x 3 person  
passenger lifts



WCs



Wi-Fi 6 ready for  
ultra-fast connectivity



Private networks for  
private workspaces  
(1GB switches, firewall  
and flood wired CAT  
6 cabling)



Timber floors



Find out more >

# What's available?

2,908 sq ft of available space at 166 Piccadilly


Building	Floor	Desks	Max occupancy	Sq ft	Highlight	Availability
166 Piccadilly	7	10	12	958	Views looking up Old Bond Street	Coming 2023
166 Piccadilly	1	22	27	1,950	Meeting room views looking up Old Bond Street	Coming y 2023

# 166 Piccadilly

7th Floor




 St. James's

 10 total headcount

 12 maximum occupancy

 958 sq ft

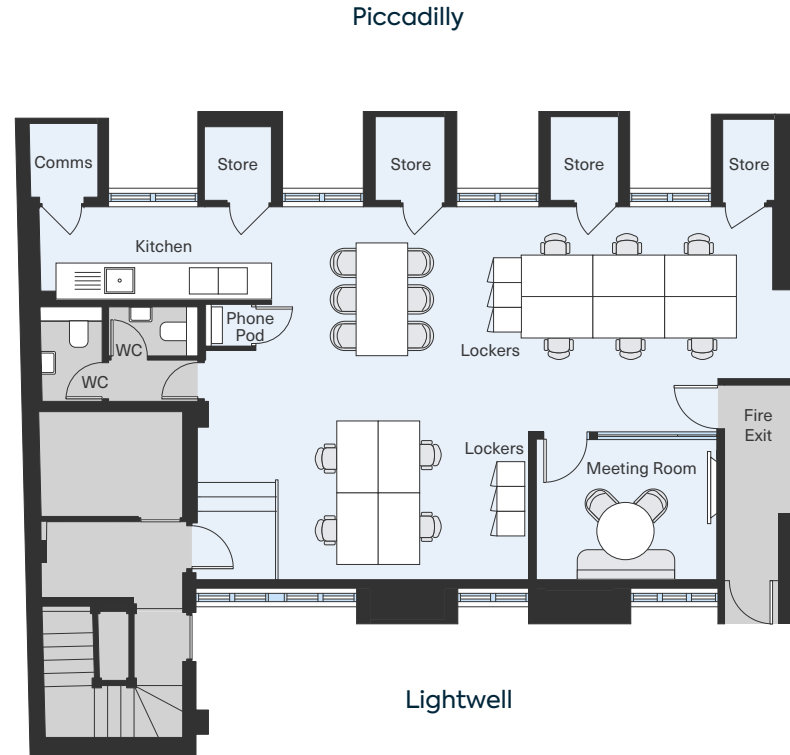
 Equipped with a secure broadband connection

 Coffee machine

 Wine Fridge

## The Workspace

Desks	10
Hot desks	6
4 persons meeting room	1
Phone pod	1
Kitchen	1
WCs	2
Comms cabinet	1
Store rooms	4





Your own desk space, 7th floor



Your own kitchen, 7th floor

# 166 Piccadilly

1st Floor



St. James's



22 total headcount



27 maximum occupancy



1,950 sq ft



Equipped with a secure broadband connection



Coffee machine



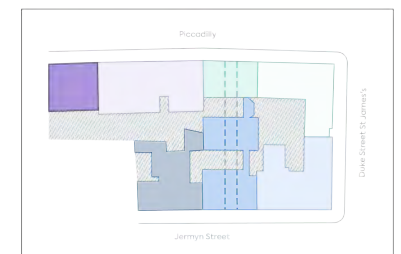
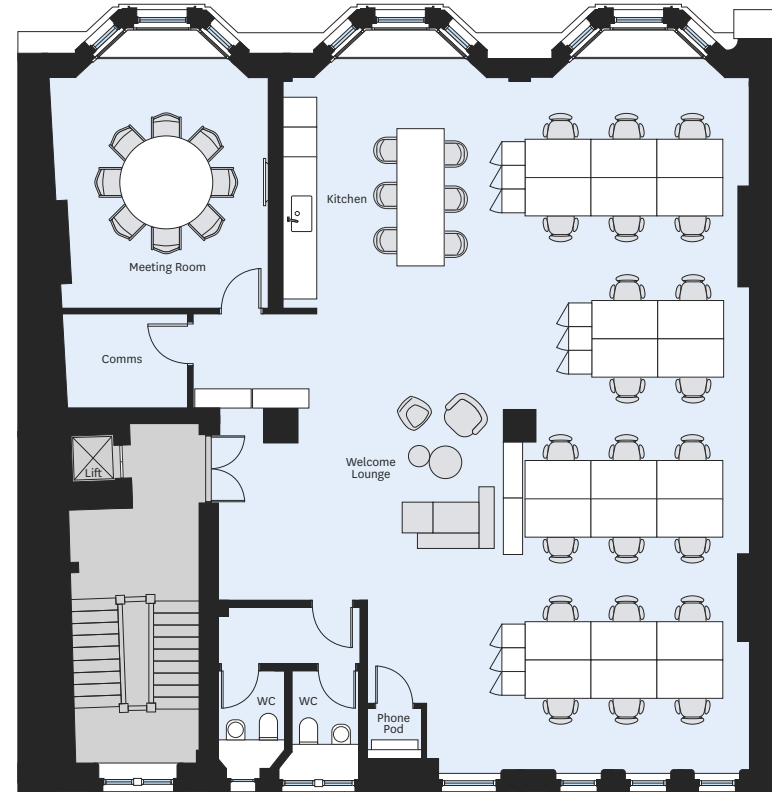
Wine Fridge

## The Workspace

Desks	22
Hot desks	6
Welcome lounge	1
8 persons meeting room	1
Phone pod	1
Kitchen	1
WCs	2
Comms cabinet	1



Piccadilly







Your own desk space, 1st floor



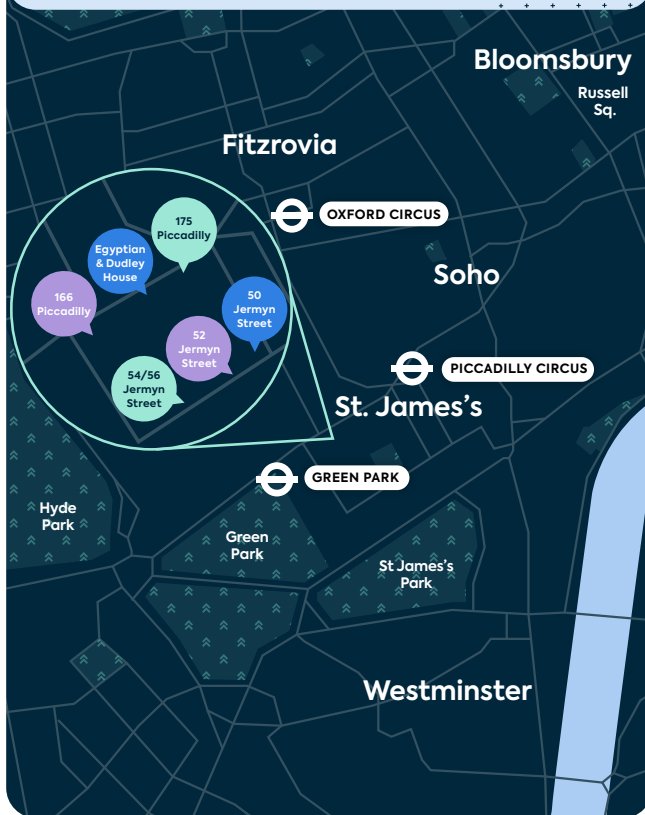
Your own meeting room, 1st floor

# Local Area

## Connections

The local transport links are superb, with Piccadilly Circus and Green Park underground stations within a few minutes' walk providing direct access to the Piccadilly, Jubilee, Victoria and Bakerloo lines.

## Nearby Stations



**Green Park**  
4 mins

**Piccadilly Circus**  
7 mins



St James's Park



Sunspel, Jermyn Street



Royal Academy of Arts



Old Bond Street

## Location

The building is ideally located to benefit from the wealth of shops, restaurants, cafés and bars that are available in Mayfair and St James's. Many world renowned luxury hotels are located nearby, including Claridges, Brown's and The Ritz.

Originally built for princes and courtiers, St James's has evolved into one of London's most dynamic districts where centuries of heritage and tradition blend with contemporary luxury and cutting edge style.

St James's has always been fashionable, but now modern art galleries and boutique arcades sit beside the artisan shirt makers and cobblers of old. Cornerstone concepts in modern dining complement established restaurants with over 200 years of history. Traditional shopfronts remain, but behind, the offerings are far from it.

## Local Finds

- 3** Shopping arcades within a 5 minute walk
- 14** Flagship stores within a 10 minute walk
- 11** Delicatessens within a 10 minute walk
- 15** Art galleries within 5 minutes, including the Royal Academy of Arts

## Eat

- 45 Jermyn Street
- Aquavit
- Café Murano
- Cecconi's
- Chutney Mary
- Fortnum and Mason
- Franco's
- Il Vicolo
- Locketts London
- Maison François
- Ole & Steen
- Quaglino's
- Sake No Hana
- Sexy Fish
- The Wolseley
- Wild Honey
- Wilton

## Culture

- BAFTA
- Christie's
- Criterion Theatre
- Grosvenor Gallery
- Her Majesty's Theatre
- Institute of Contemporary Arts
- Jermyn Street Theatre
- Martyn Gregory
- Royal Academy of Arts
- Theatre Royal Haymarket
- White Cube Mason's Yard
- Whitford Fine Art

## Hotels

- Brown's Hotel
- Le Meridien
- The Cavendish
- The Ritz London
- The Stafford

## Private Members Clubs

- Annabel's
- Boodle's
- Naval and Military Club
- Oxford and Cambridge Club
- The Arts Club
- The Athenaeum Club
- The Travellers Club
- White's Club



Sexy Fish, Berkeley Square



Quaglino's

## Fortnum & Mason



## The Ritz London



Berry Bros & Rudd

# GPE.

Contact our Fitted & Fully Managed team at GPE:

---

**Grace Tomlinson**

+44 (0) 7871 678 728

**David Korman**

+44 (0) 7435 939 956

[fittedandmanaged@gpe.co.uk](mailto:fittedandmanaged@gpe.co.uk)

