

14/17 Market Place, Fitzrovia, W1W 8AJ

This is Kent House

A Fully Managed workspace
where your people are our priority.

gpe.co.uk/portfolio/kent-house

Contents

03 What's in your building



04 Why us



06 Availability schedule



07 Floorplan



09 Location



14 Get in touch



Kent House



An iconic place to do business

Nothing about Kent House is ordinary. From the unmistakable Art Deco building – where stunning original features meet cutting-edge interior design – to its location in the heart of London’s West End, there are few more sought-after locations in the capital.



Cycle storage

Super-secure cycle spaces for your beloved two wheeled companion.



Shower cubicles

Premium end of journey facilities, including shower amenities on each floor.



On-site receptionist

Providing a warm welcome you and your visitors.



sesame® workplace app

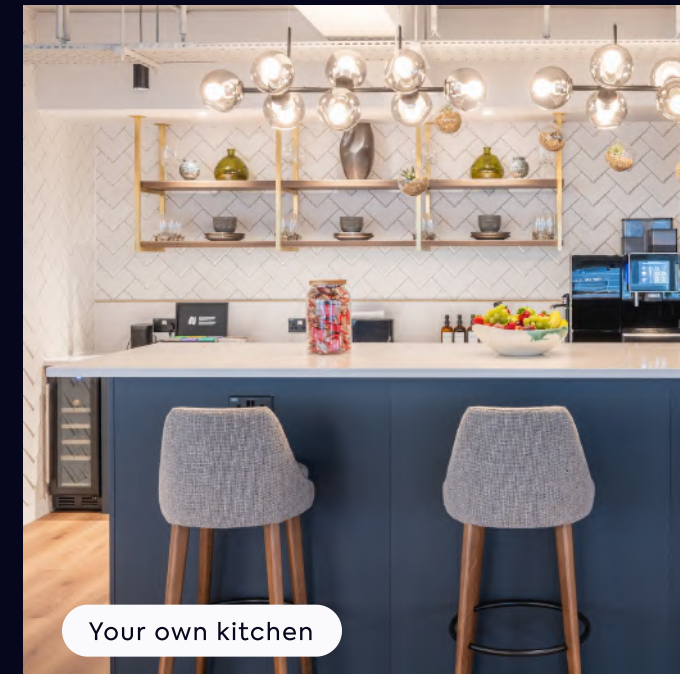
Think contactless access, desk bookings and more.

[Contents](#)

Kent House



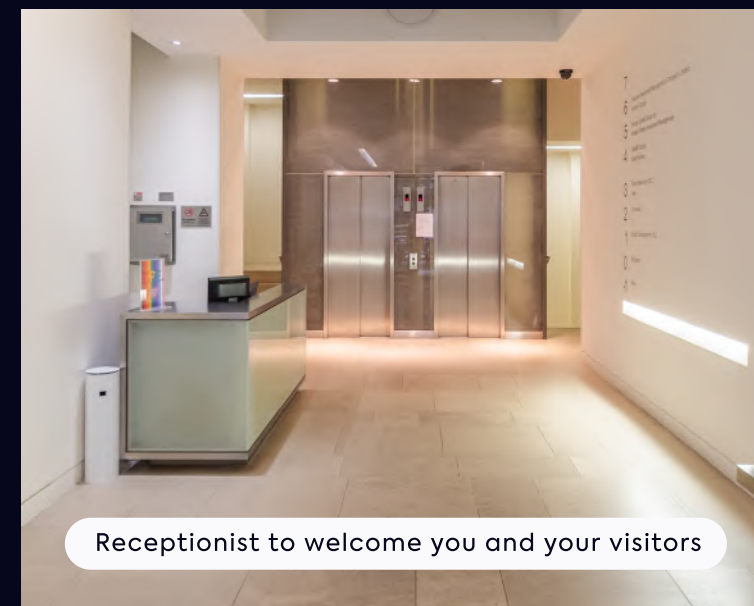
Your own meeting rooms



Your own kitchen



Break out space to collaborate with colleagues

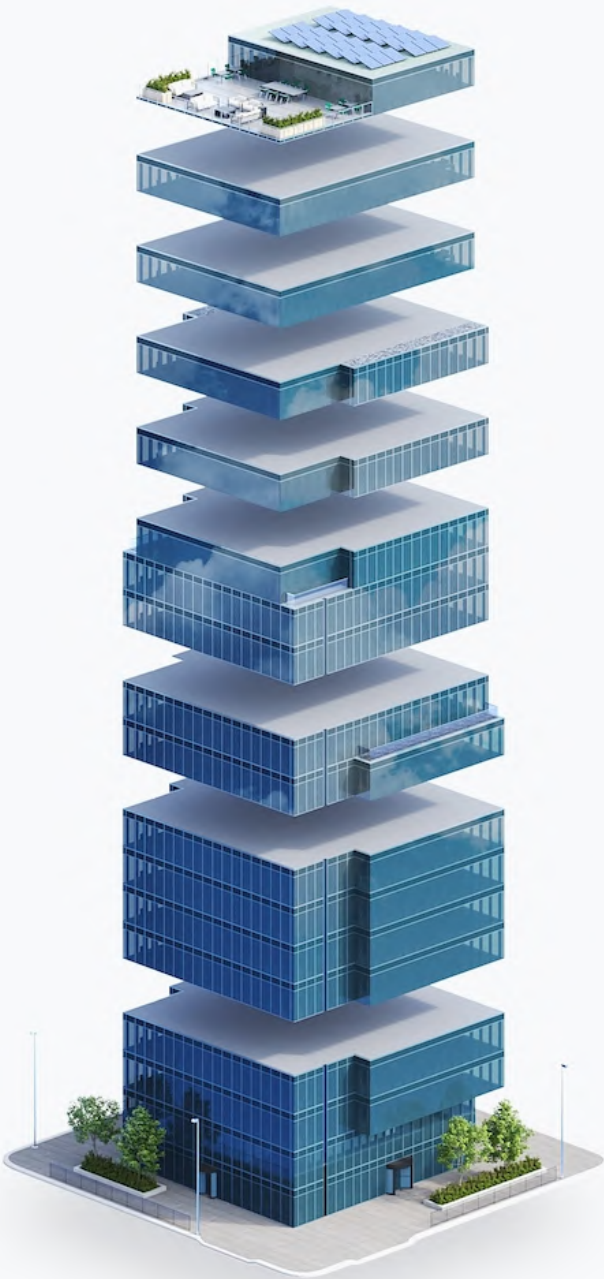


Receptionist to welcome you and your visitors



What's in your building

It's all included in one bill, no hidden extras



- Events, Food and Beverages
- Security
- IT Connectivity and Support
- Utilities
- Cleaning and Maintenance
- Fully Furnished Workspace
- Building Service Charge
- Business rates
- Rent

6 reasons to choose GPE Fully Managed



1 – Fully managed and fully yours

Say hello to a furnished workspace that's exclusively yours. Our Fully Managed service is a truly hassle-free experience.

[How we make it hassle-free](#)



2 – All-in-one bill with no hidden extras

Say goodbye to multiple bills. Each month you'll receive one all-inclusive bill from us, and, your bill remains fixed for your contract period.

[See what's included](#)



3 – Relax, you're in safe hands

We've been doing this for a long time. Our in-house experts curate the perfect experience, so you can enjoy market-leading workspaces. We own and manage our buildings, so you'll always deal directly with us.

[Learn more about us](#)



4 – Plug in and go – your tech's all sorted

You get safe, secure and ultra-fast wireless connectivity so you can work seamlessly from day one, with IT help on-hand. Everyone gets access to sesame™, your award-winning workspace app.

[Head over to the tech](#)



5 – Working towards a better world

As an environmentally-conscious company, we prioritise sustainability and refuse to engage in greenwashing. We're working towards being a net zero carbon business by 2030.

[How we're reducing our impact](#)



6 – Exceptional service as standard

Your people are our priority. It's why we've developed our customer promise – the values by which we operate – so we can deliver you a great experience.



Availability schedule

Let’s get down to the details...

The details

Floor	Configuration	Max occupancy	Sq ft	Key features	Availability
1st Floor	46 desks + 3 meeting rooms + 1 private office	62	3,995	Art deco feel with multiple breakout spaces	<div><div></div>Available now</div>

Floorplan

1st Floor, Kent House

-  Fitzrovia
-  3,995 sq ft
-  62 maximum occupancy
-  46 current desks
-  3 meeting rooms
-  Breakout area
-  Private office
-  2 phone booths
-  Kitchen
-  Wine fridge
-  Coffee machine



[Contents](#)

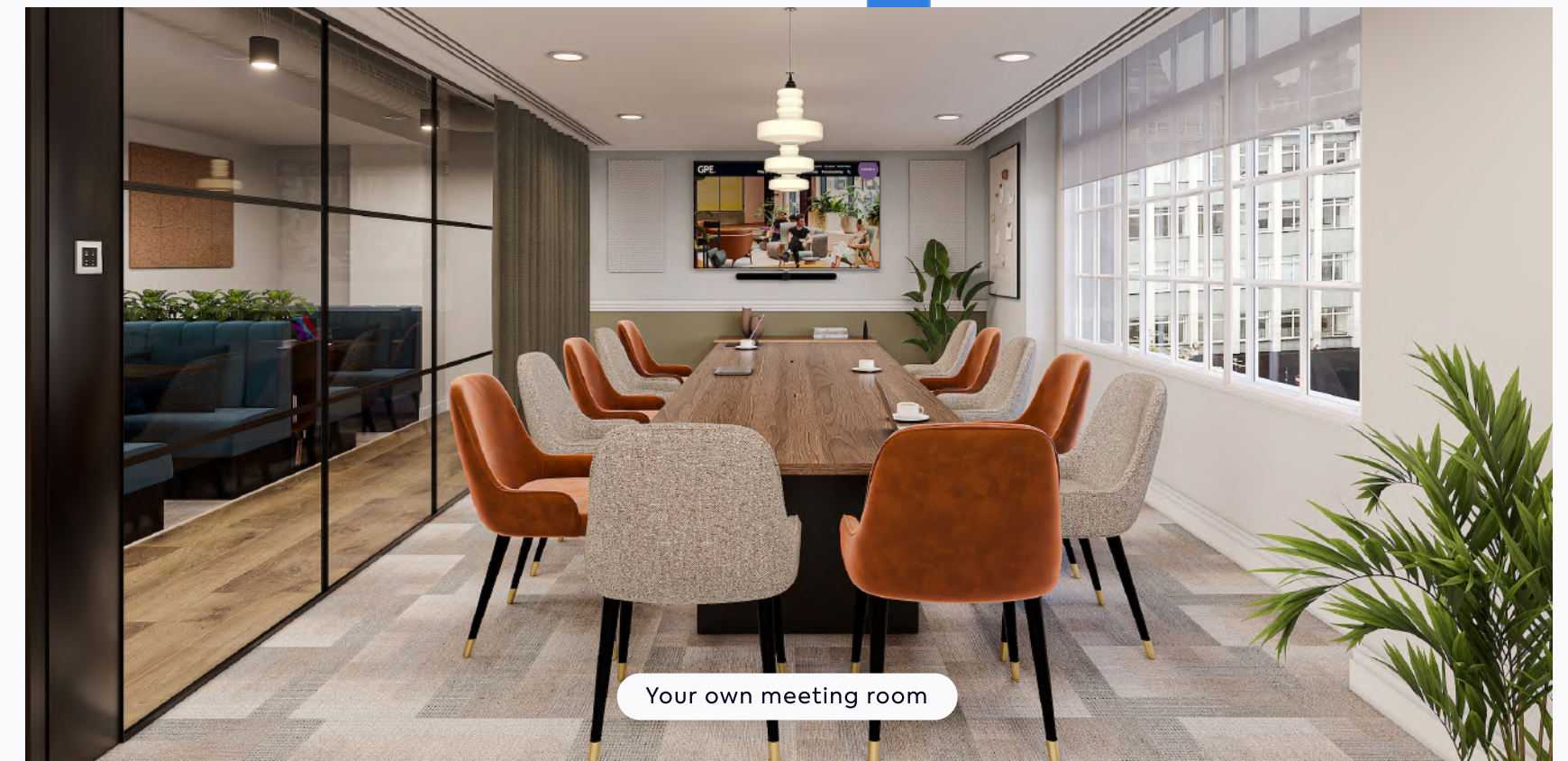
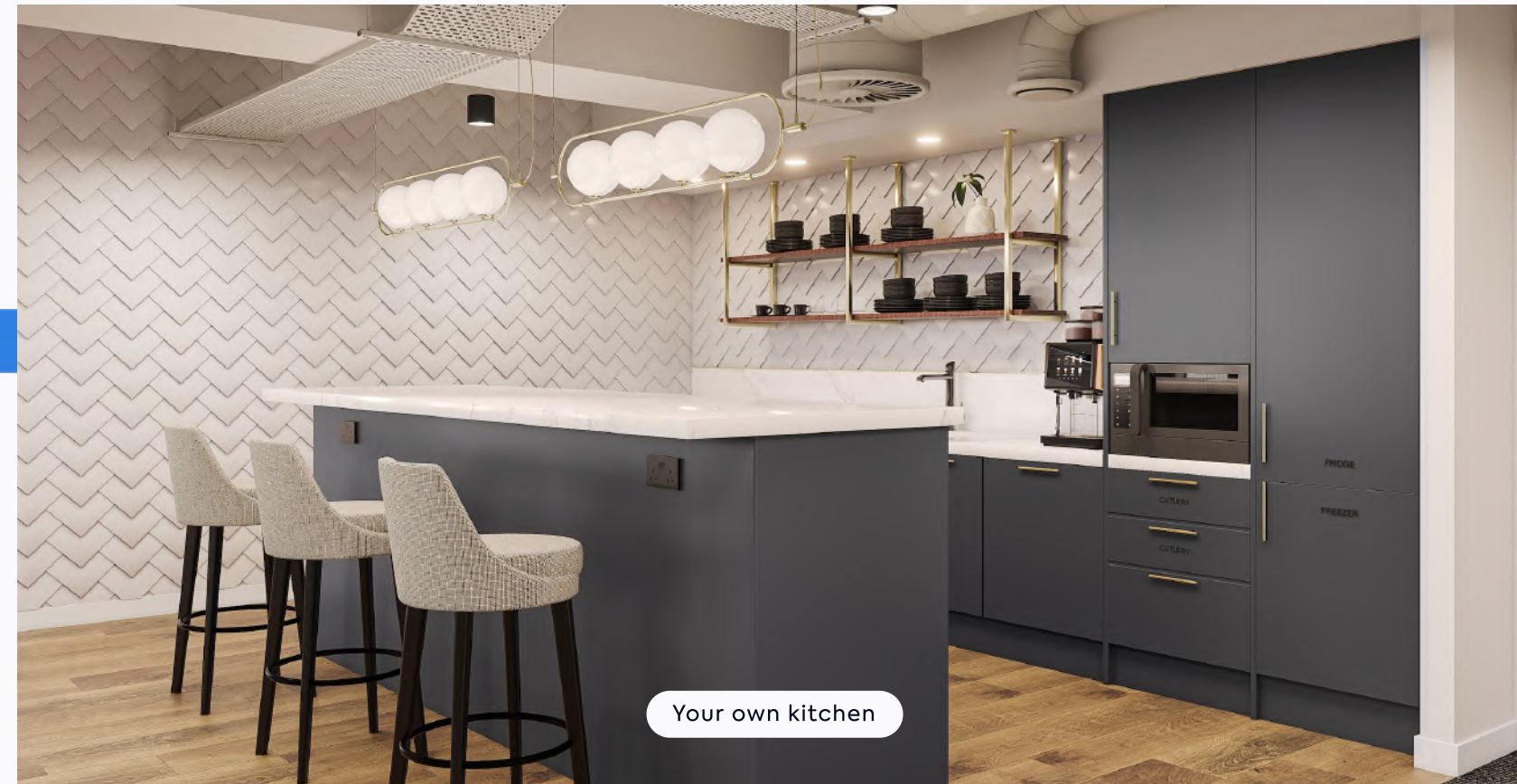
Kent House

[View/download 2D floorplan](#)



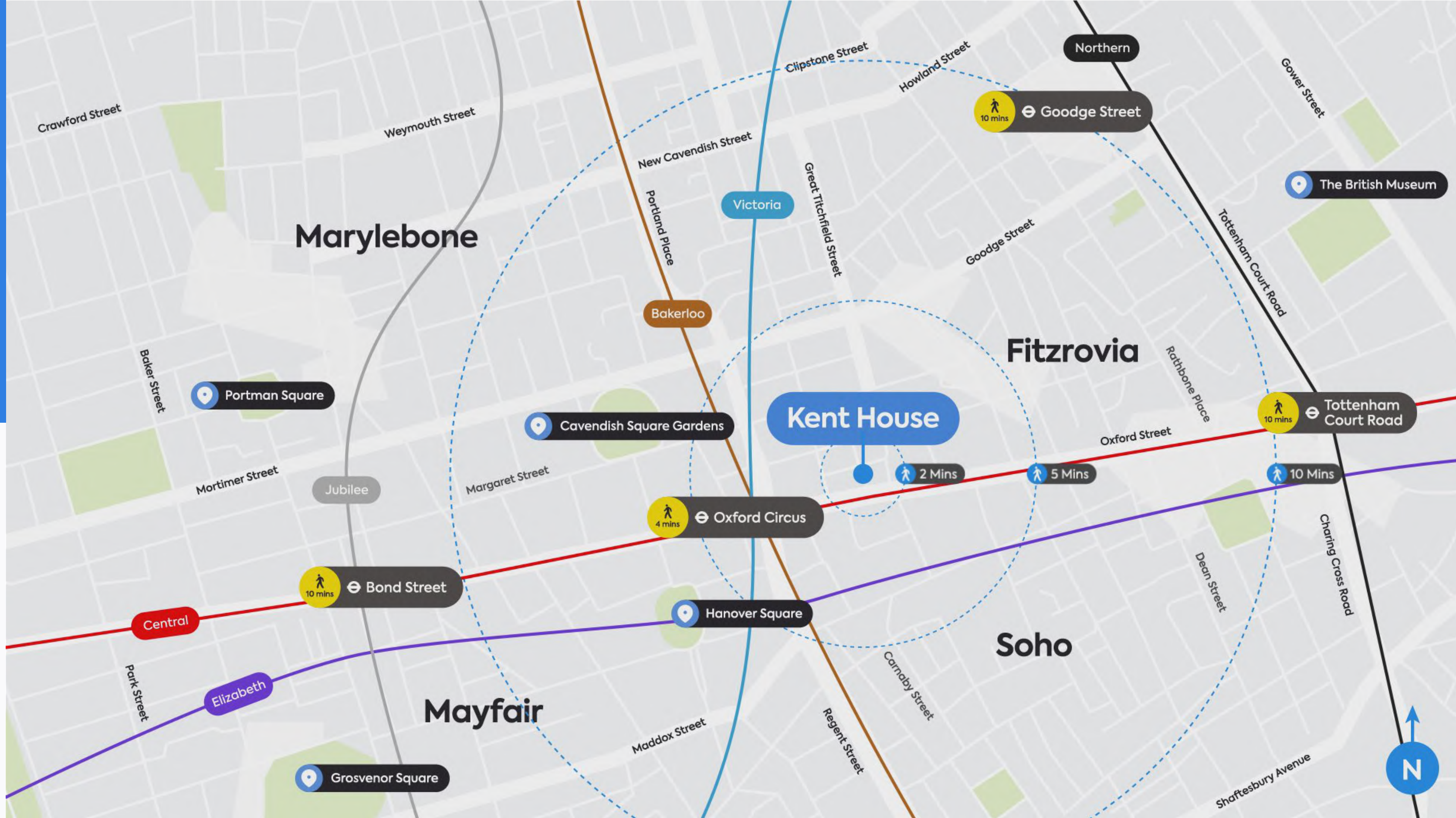
*This floorplans colour scheme and furnishings are for illustrative purposes only.

1st Floor



Truly Connected

Kent House offers the best of both worlds. While the space offers a little tranquillity away from the noise, three underground lines - including two Elizabeth line stations - are within a 10 minute walk giving you easy access to the best of London and beyond.



 **Walking
Distance**

Oxford Circus
4 mins
   

Bond Street
10 mins
   

Tottenham Court Road
10 mins
   

Goodge Street
10 mins
 



Pollocks Toy Museum



Cavendish Square



Drunch



Charlotte Street Hotel



The Oxford Market



Oxford Street



Tried and tasted

Within

10

minutes



Highlights

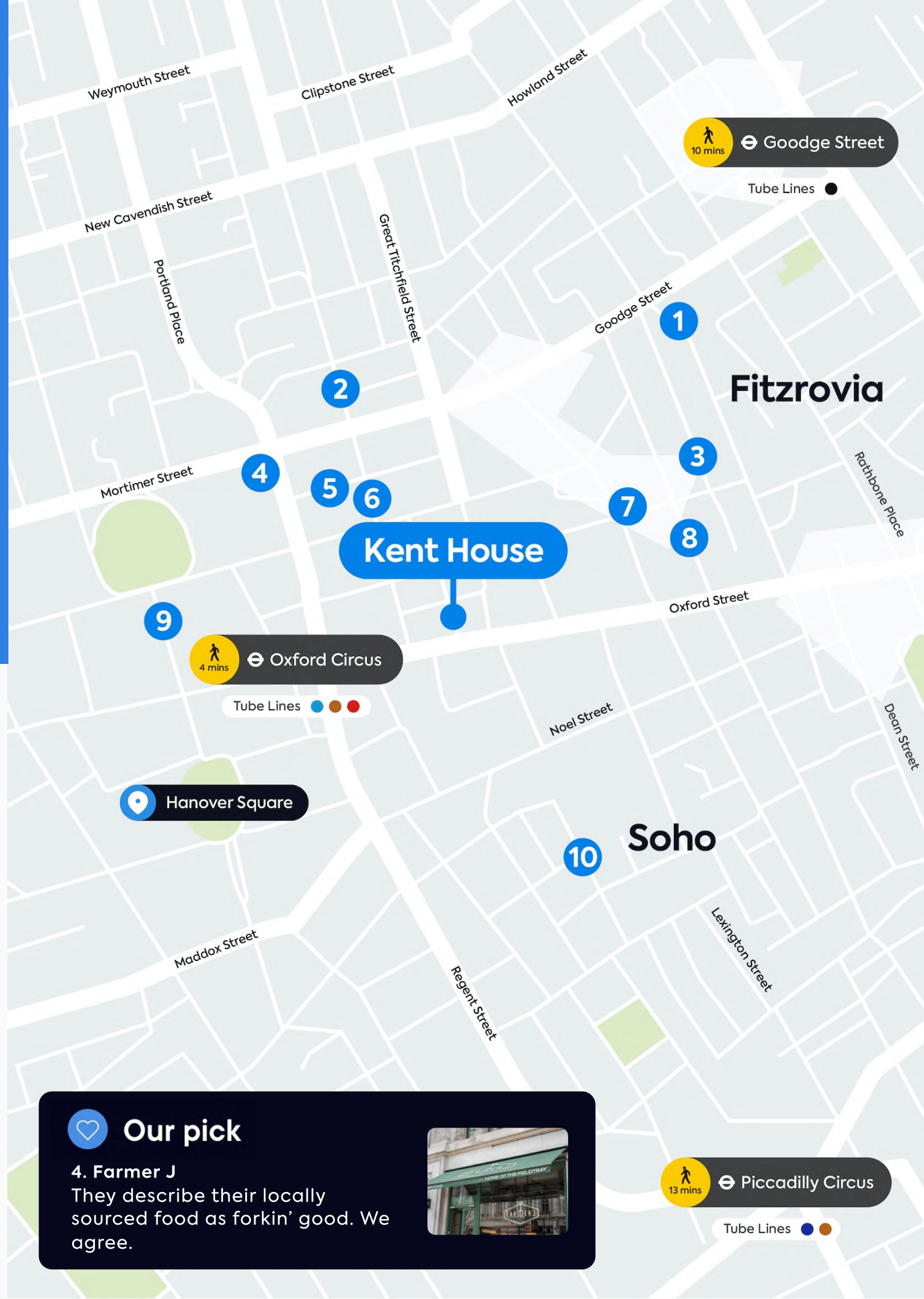
- 1 Mr Fogg's House of Botanicals
- 2 Riding House Café
- 3 The Bricklayers Arms
- 4 Farmer J
- 5 Kiss the Hippo Coffee
- 6 Faros
- 7 Kaffeine
- 8 Circolo Popolare
- 9 Market Halls
- 10 Social Eating House



Our pick

4. Farmer J

They describe their locally sourced food as forkin' good. We agree.



Good food



The food scene near Kent House is strong, so you never have to wander far when hunger strikes. For great coffee give Kiss the Hippo a try, for a classic pub lunch dive into The Bricklayers Arms, or enjoy outrageously good Italian food at Circolo Popolare.

Food & Drink

Things to do

Hidden Gems

Spoilt for choice

Within

10

minutes



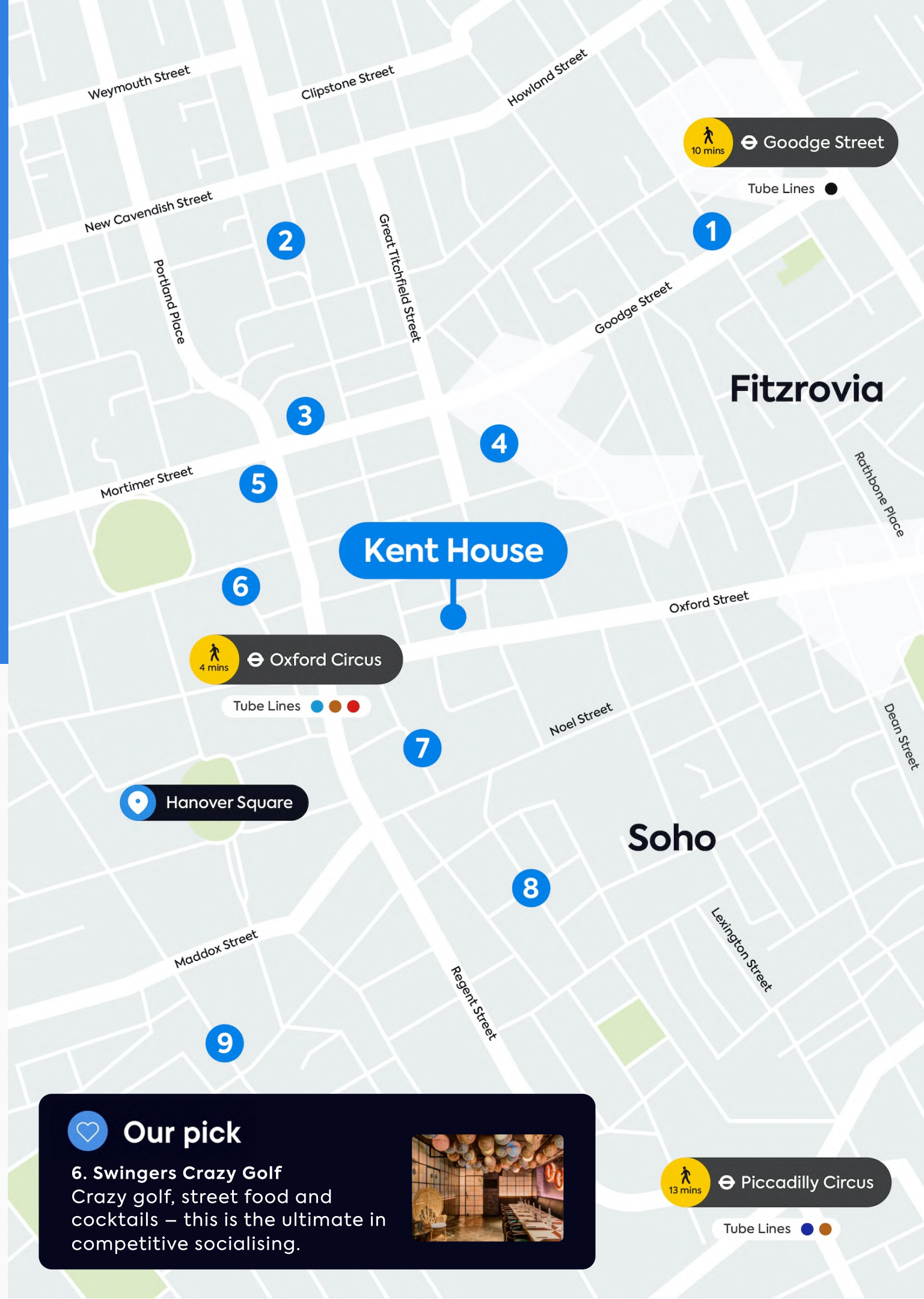
Highlights

- 1 Pollocks Toy Museum
- 2 Java Whiskers Cat Café
- 3 Psyche
- 4 The Cartoon Museum
- 5 Regent Street Cinema
- 6 Swingers Crazy Golf
- 7 The London Palladium
- 8 Carnaby Street
- 9 Halcyon Gallery



Our pick

6. Swingers Crazy Golf
Crazy golf, street food and cocktails – this is the ultimate in competitive socialising.



Things to do

Kent House is surrounded by the iconic and the curious. Art lovers, theatre lovers, toy lovers and fun lovers... whatever your passion there are amazing finds to be discovered.

Food & Drink

Things to do

Hidden Gems

On your doorstep

Within

10

minutes



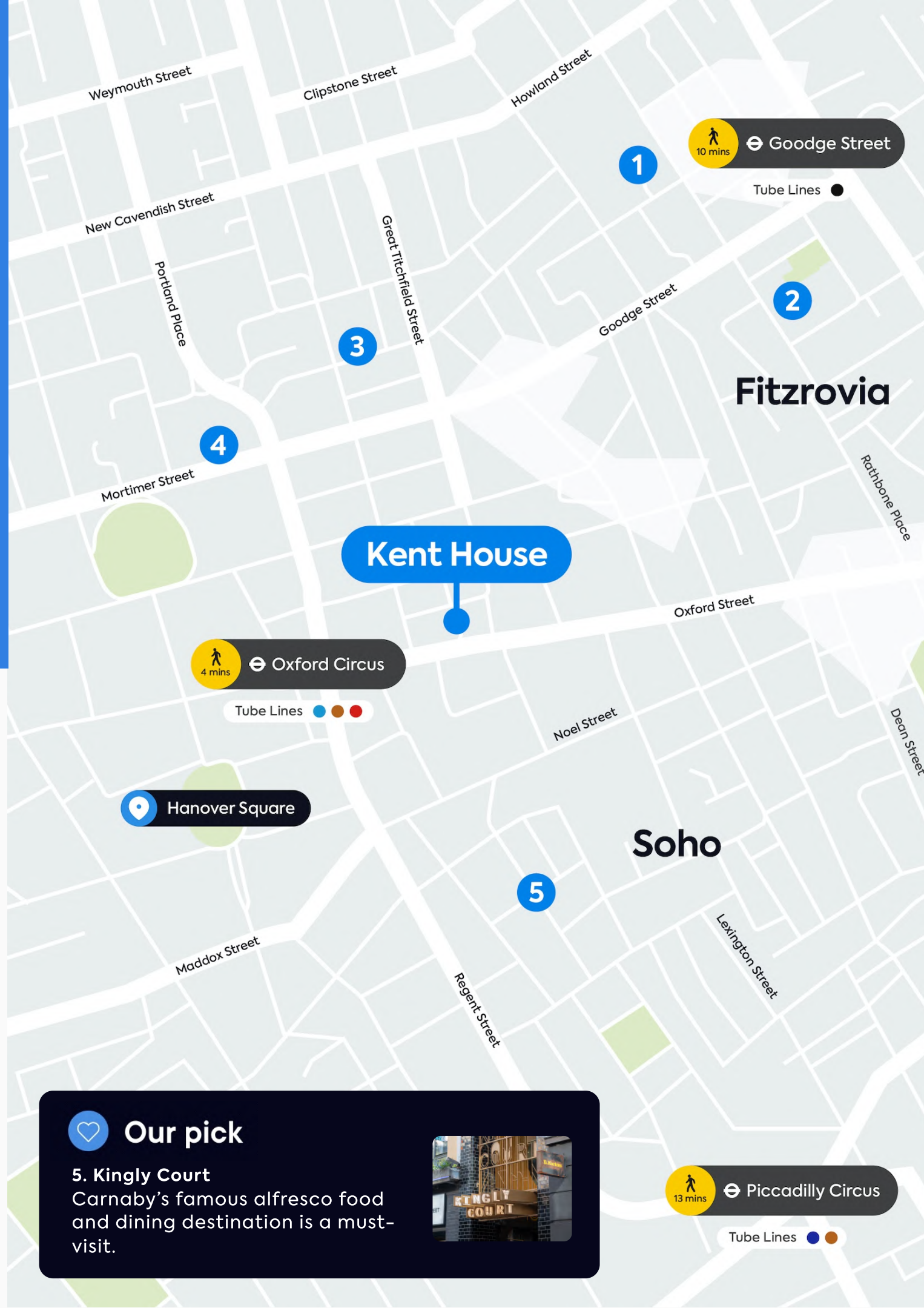
Highlights

- 1 The Fitzrovia Mural
- 2 Goode Flowers
- 3 Attendant Coffee Roasters
- 4 Chaun Spa at The Langham
- 5 Kingly Court



Our pick

5. Kingly Court
Carnaby's famous alfresco food and dining destination is a must-visit.



Hidden Gems



There are plenty of spots that the locals keep for themselves, each of which add to the area's unique charm. And if you decide to make Kent House your new workspace, you'll be one of those in the know.

Food & Drink

Things to do

Hidden Gems

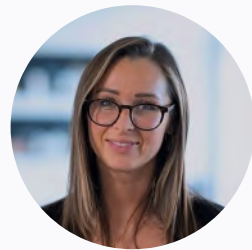
Get in touch

We hope we've piqued your interest, but it's only just the beginning.
We'd love to show you more. Get in touch to book your viewing today.



David Korman

+44 (0) 7435 939 956
david.korman@gpe.co.uk



Grace Tomlinson

+44 (0) 7871 678 728
grace.tomlinson@gpe.co.uk



Molly Maguire

+44 (0) 7887 841 816
molly.maguire@gpe.co.uk

Talk to us

Download as PDF



**Find a space that's fully
yours. More locations
across London.**

See availability