



52 Jermyn Street, London SW1Y 6LX

This is 52 Jermyn Street

A Fully Managed workspace
where your people are our priority.

GPE.
Greater together

gpe.co.uk/portfolio/52-jermyn-street

Contents

03 What's in your building



04 Why us



06 Availability schedule



07 Floorplan



09 Location



14 Get in touch



Marrying the history of yesterday with the potential of tomorrow

From its period facade to its ultra-stylish open-plan space and cutting-edge tech, 52 Jermyn Street is as iconic as its surroundings.



24 hour access and security

When business never stops, come and go as you please.



A warm welcome

Receptionist to welcome you and your visitors.



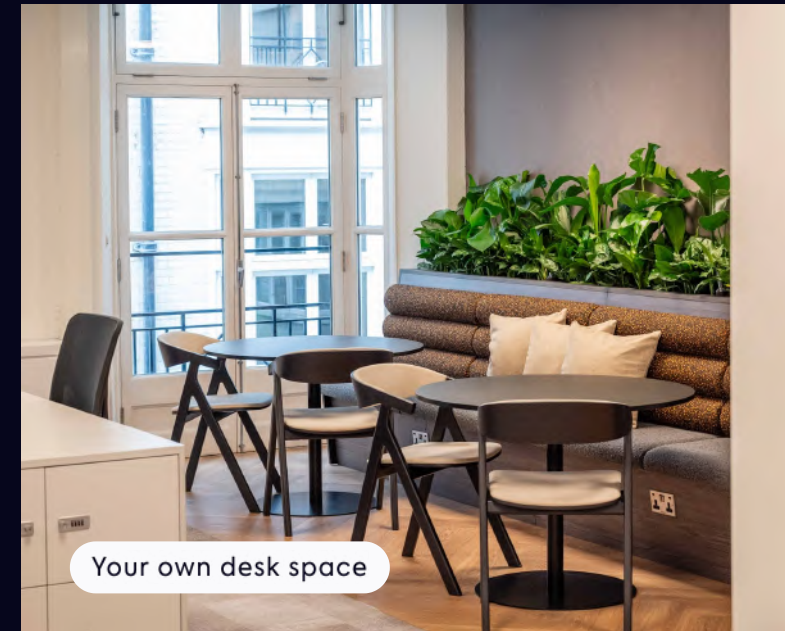
Ultra fast wifi

Wi-Fi 6 ready for ultra-fast connectivity.



Private networks

For each workspace with managed switches, firewalls and flood wired CAT 6 cabling.



Your own desk space



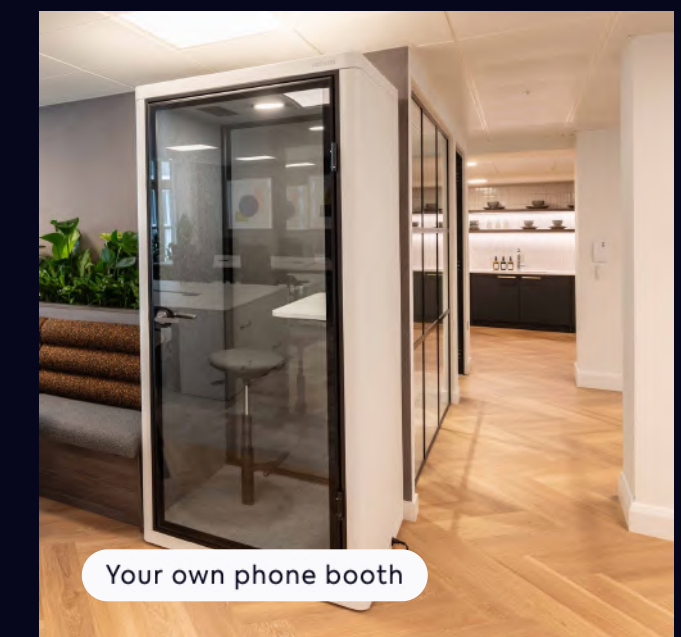
Your own kitchen



Your own breakout areas

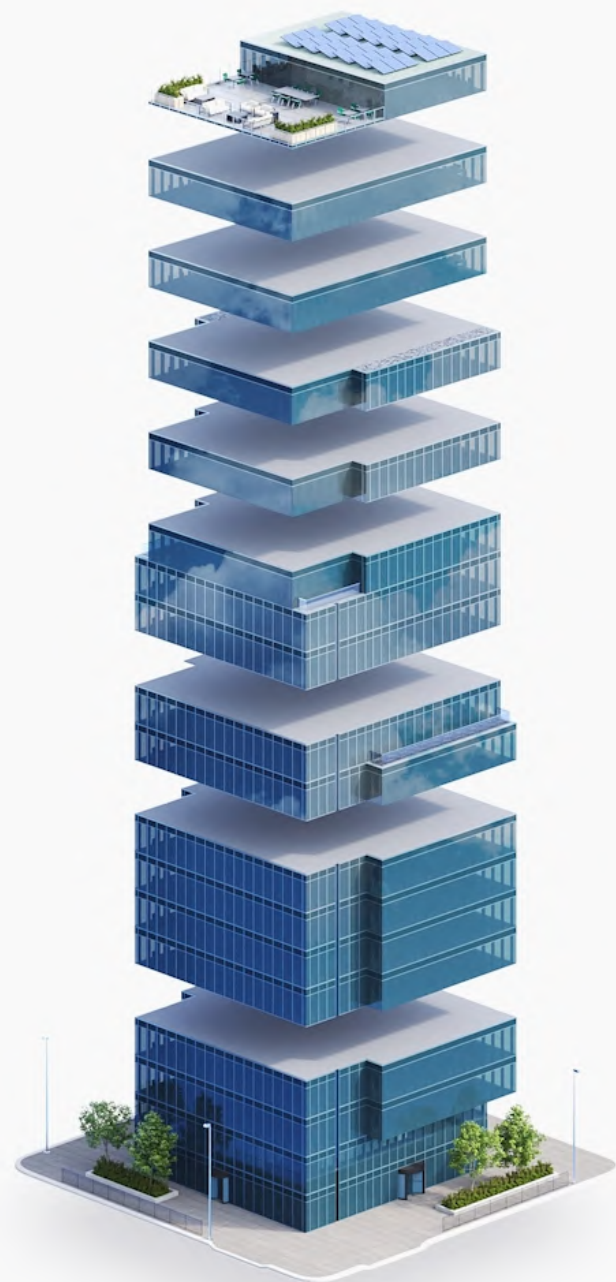


Your own meeting room



Your own phone booth

It's all included in one bill, no hidden extras



- Events, Food and Beverages
- Security
- IT Connectivity and Support
- Utilities
- Cleaning and Maintenance
- Fully Furnished Workspace
- Building Service Charge
- Business Rates
- Rent

6 reasons to choose GPE Fully Managed



1 – Fully managed and fully yours

Say hello to a furnished workspace that's exclusively yours. Our Fully Managed service is a truly hassle-free experience.

[How we make it hassle-free](#)



2 – All-in-one bill with no hidden extras

Say goodbye to multiple bills. Each month you'll receive one all-inclusive bill from us, and, your bill remains fixed for your contract period.

[See what's included](#)



3 – Relax, you're in safe hands

We've been doing this for a long time. Our in-house experts curate the perfect experience, so you can enjoy market-leading workspaces. We own and manage our buildings, so you'll always deal directly with us.

[Learn more about us](#)



4 – Plug in and go – your tech's all sorted

You get safe, secure and ultra-fast wireless connectivity so you can work seamlessly from day one, with IT help on-hand. Everyone gets access to sesame™, your award-winning workspace app.

[Head over to the tech](#)



5 – Working towards a better world

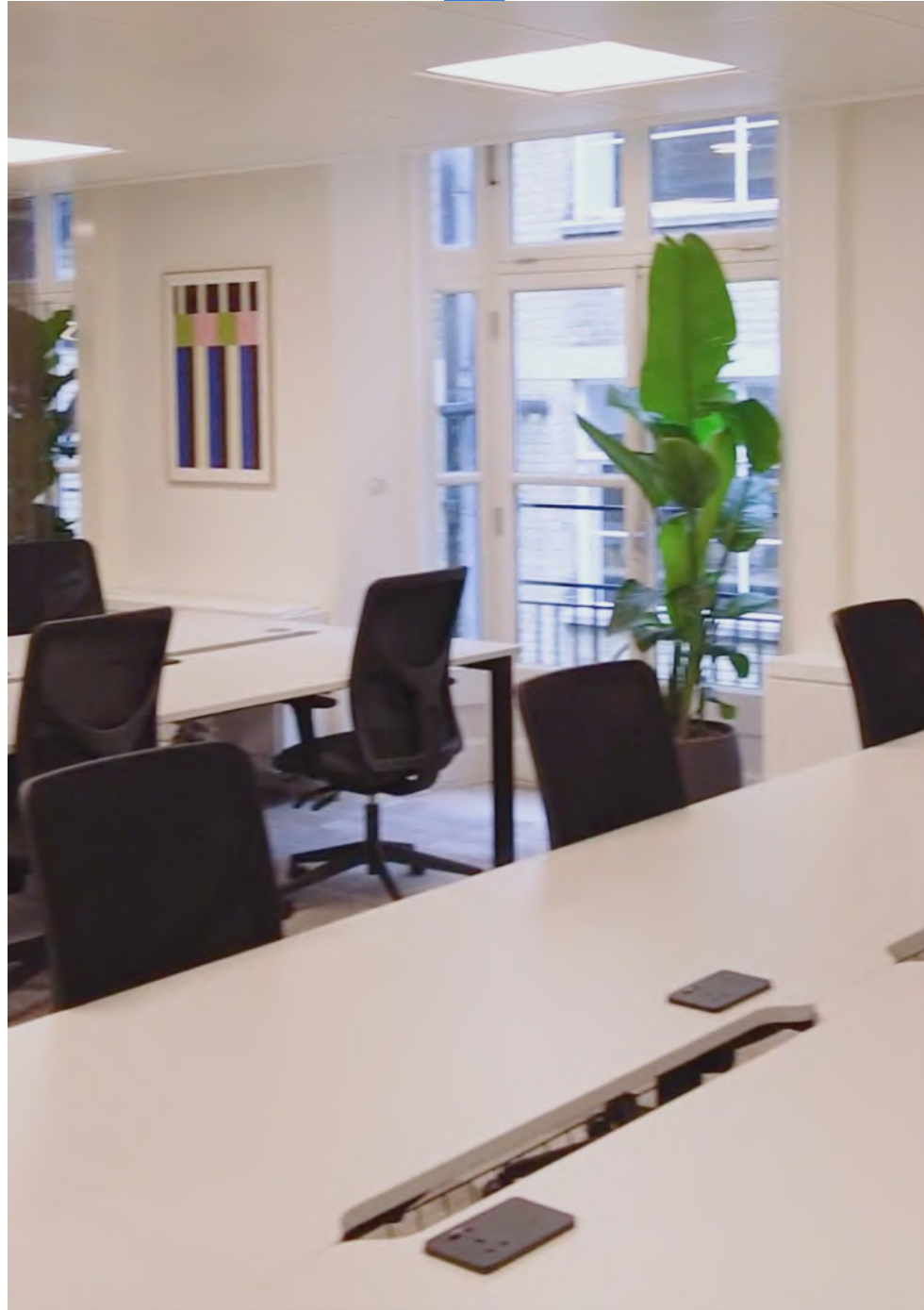
As an environmentally-conscious company, we prioritise sustainability and refuse to engage in greenwashing. We're working towards being a net zero carbon business by 2030.

[How we're reducing our impact](#)



6 – Exceptional service as standard



Your people are our priority. It's why we've developed our customer promise – the values by which we operate – so we can deliver you a great experience.



Availability schedule

Let's get down to the details...

The details

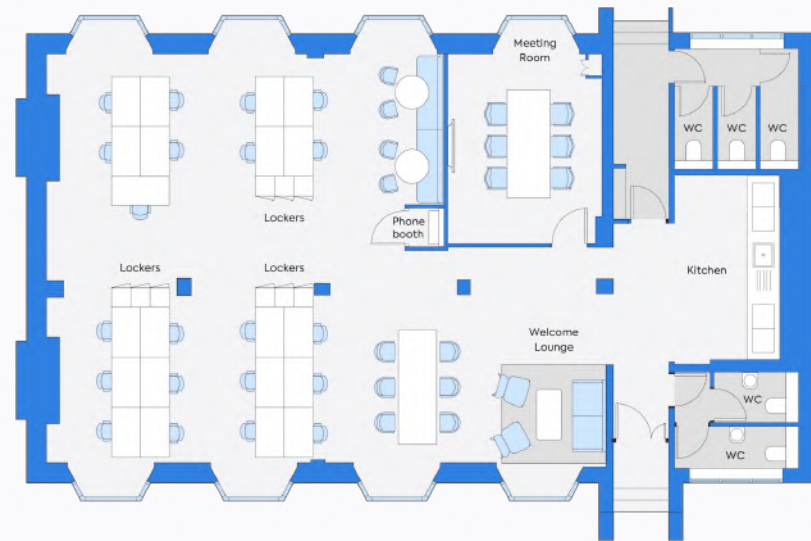
Floor	Configuration	Max occupancy	Sq ft	Floorplan	Key features	Availability
3rd Floor	21 desks, 1 meeting room, 1 phone booth + breakout area	24	1,600		Lounge, kitchen and phone booth	 Recently let

Floorplan

3rd Floor, 52 Jermyn Street



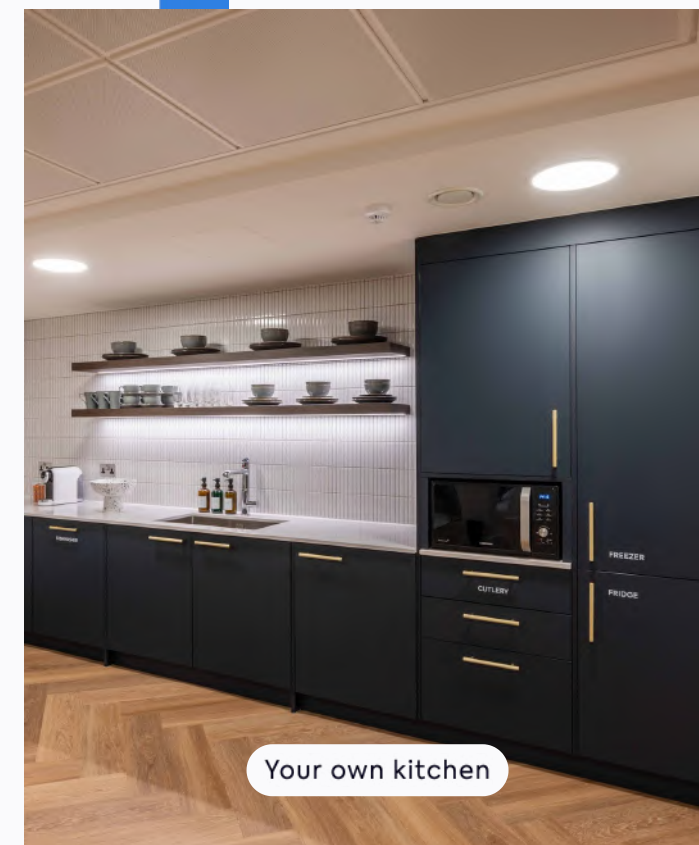
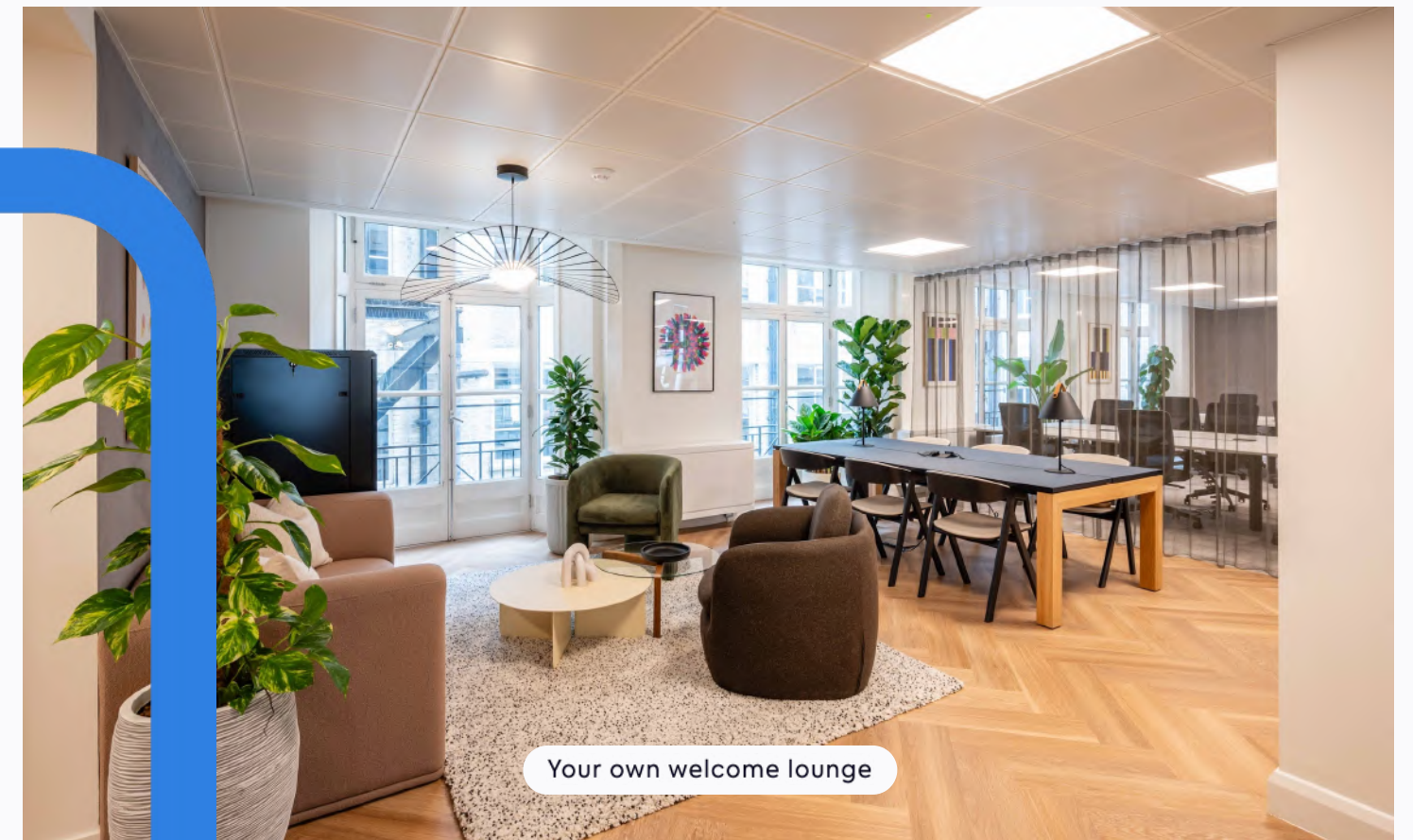
- St. James's
- 1,600 sq ft
- 24 maximum occupancy
- 21 current desks
- 6 person meeting room
- Welcome lounge
- Phone booth
- Breakout area
- Kitchen
- Coffee machine

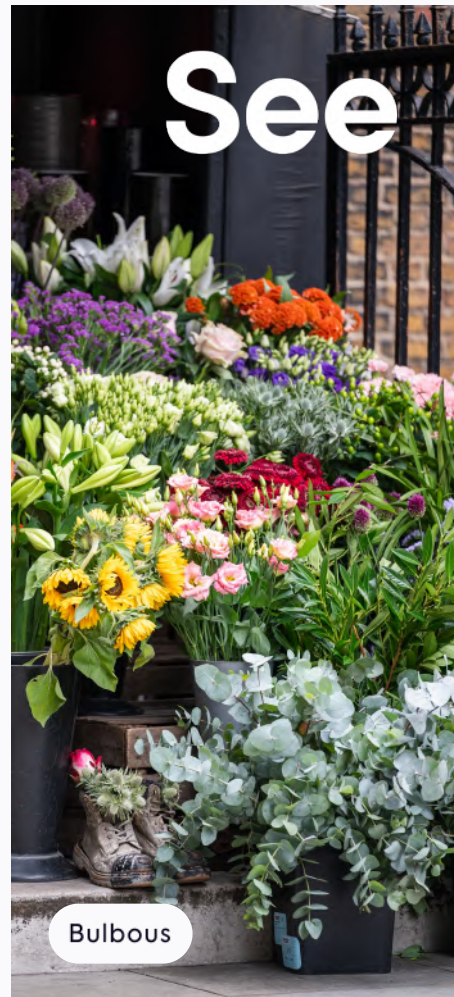


[View/download 2D floorplan](#)

*This floorplans colour scheme and furnishings are for illustrative purposes only.

3rd Floor





Tried and tasted

Within

10

minutes

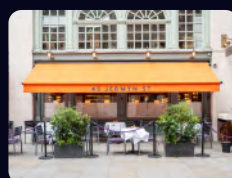


Highlights

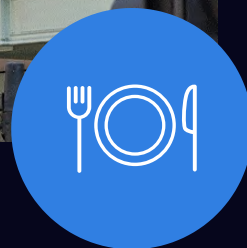
- 1 Le Deli Robuchon
- 2 The Wolseley
- 3 The Gentlemen Baristas
- 4 Fortnum & Mason
- 5 Berry Bros. & Rudd
- 6 45 Jermyn Street
- 7 Brasserie Zédel
- 8 Perks & White
- 9 Fallow

Our pick

6. 45 Jermyn Street
Elegant dining paired with an innovative menu. A classy spot for after work supper.



Good food



It's safe to say that quality dining is always on the menu in your new neighbourhood. There's something for every palette and every time of day, whether that's breakfast at Brasserie Zedel, coffee and elevenses at Perk and White or a wonderful dinner at The Wolseley.

Spoilt for choice

Within

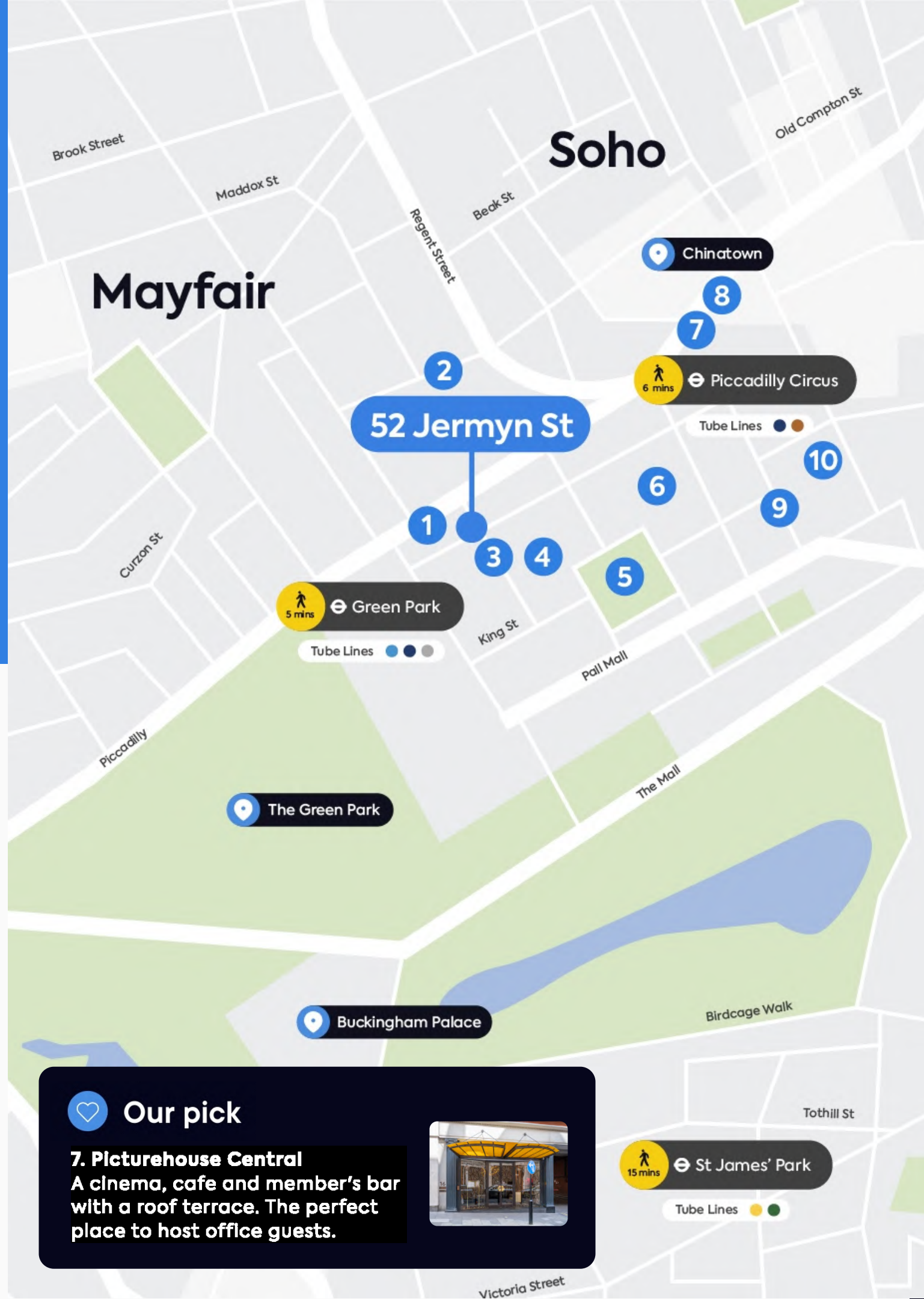
10

minutes



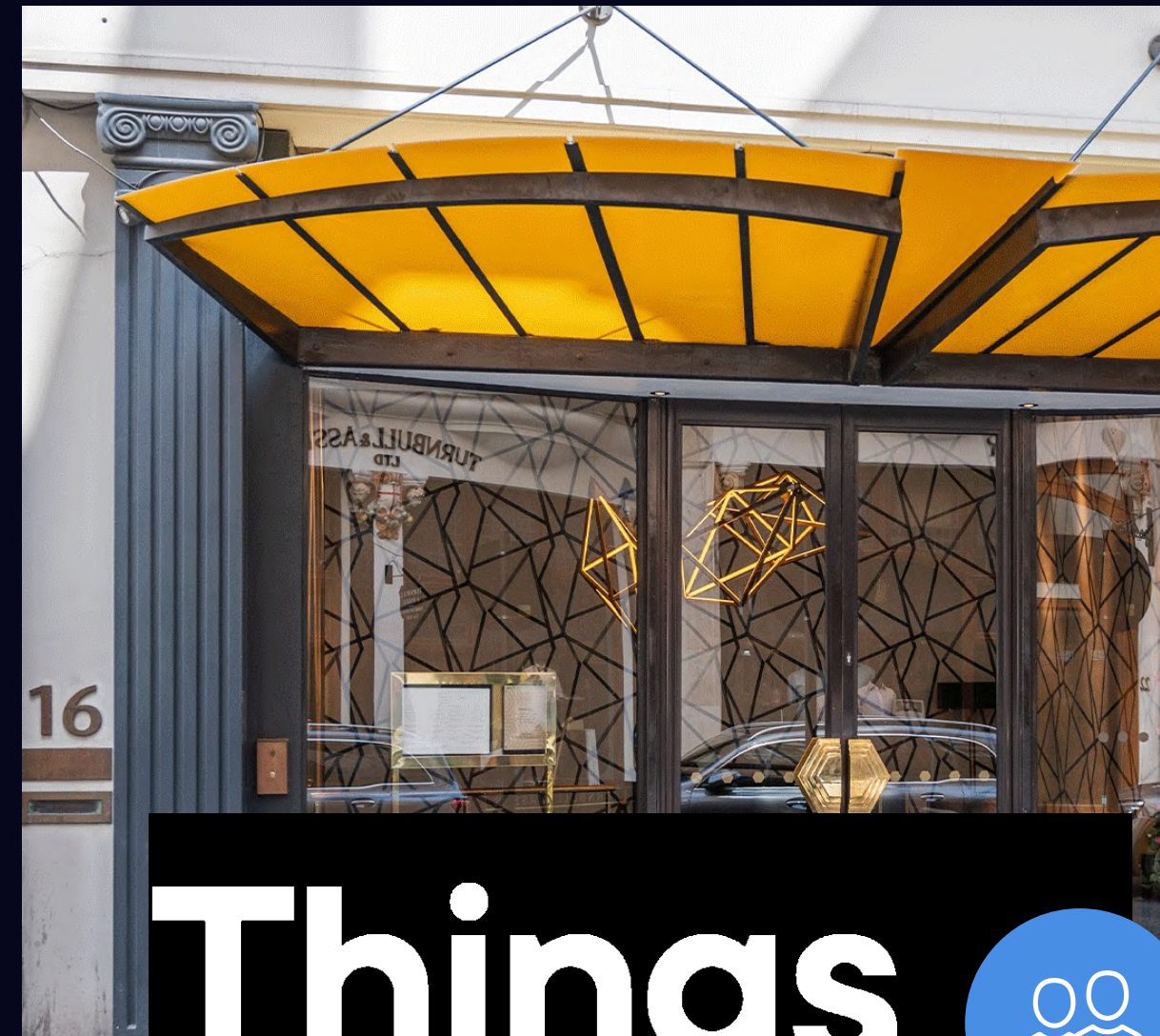
Highlights

- 1 Burlington Arcade
- 2 Royal Academy of Arts
- 3 Quaglino's
- 4 White Cube Mason's Yard
- 5 St James's Square
- 6 CrossFit Piccadilly
- 7 Picturehouse Central
- 8 The Crystal Maze LIVE Experience
- 9 His Majesty's Theatre
- 10 Japan Centre



Our pick

7. Picturehouse Central
A cinema, cafe and member's bar with a roof terrace. The perfect place to host office guests.



Things to do



Piccadilly offers an array of attractions to suit all personalities. From taking a deep breath of fresh Green Park air, or those that fancy a stroll around the Royal Academy of Arts. For the competitive minds, why not take each other on at The Crystal Maze LIVE experience?

On your doorstep

Within

10

minutes



Highlights

- 1 Sheperd market
- 2 Berkeley Square
- 3 Maison Assouline
- 4 Floris
- 5 Bulbous Flowers
- 6 St James Market Pavillion
- 7 Waterloo Gardens



Our pick

1. Sheperd market
Boutique shops, small cafes and pedestrianised streets make this the perfect lunch spot.



Hidden Gems

Escape the bustle and discover many wonderful local spots to relax, shop and get inspired. Immerse yourself in a little culture at the stunning Maison Assouline or maybe take some time to watch the world go by at the St James Market Pavillion.

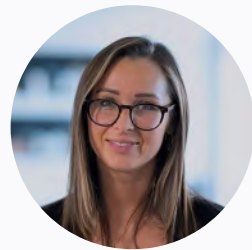
Get in touch

We hope we've piqued your interest, but it's only just the beginning.
We'd love to show you more. Get in touch to book your viewing today.



David Korman

+44 (0) 7435 939 956
david.korman@gpe.co.uk



Grace Tomlinson

+44 (0) 7871 678 728
grace.tomlinson@gpe.co.uk



Molly Maguire

+44 (0) 7887 841 816
molly.maguire@gpe.co.uk

Talk to us



**Find a space that's fully
yours. More locations
across London.**

See availability